



# GAT MONTHLY MEMBERSHIP PROGRESS REPORT

Results as of: 4/30/2022

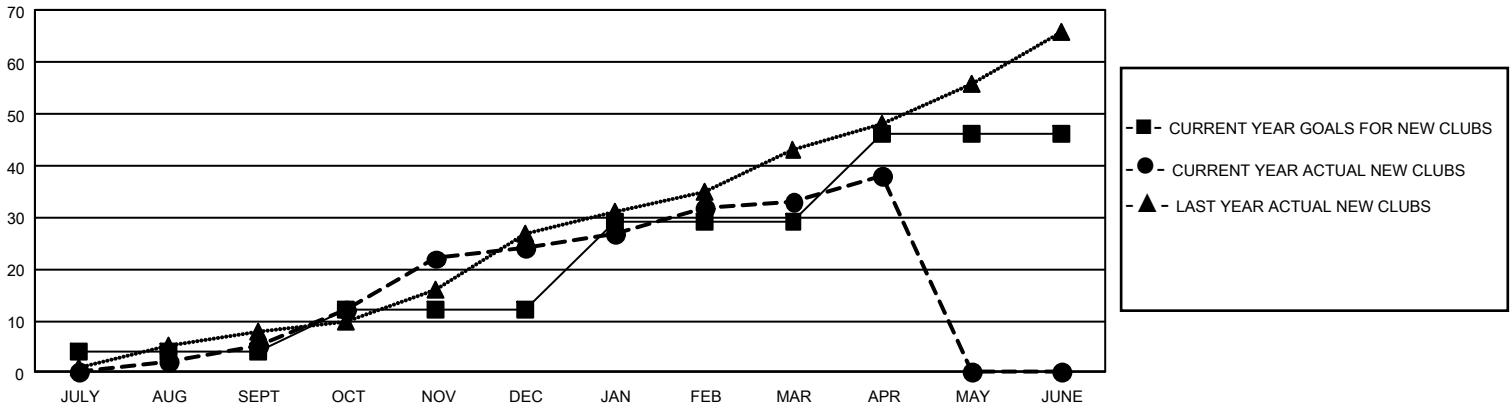
## GAT Constitutional Area 7

REPORT DOES NOT INCLUDE CLUBS IN UNDISTRICTED AREAS.

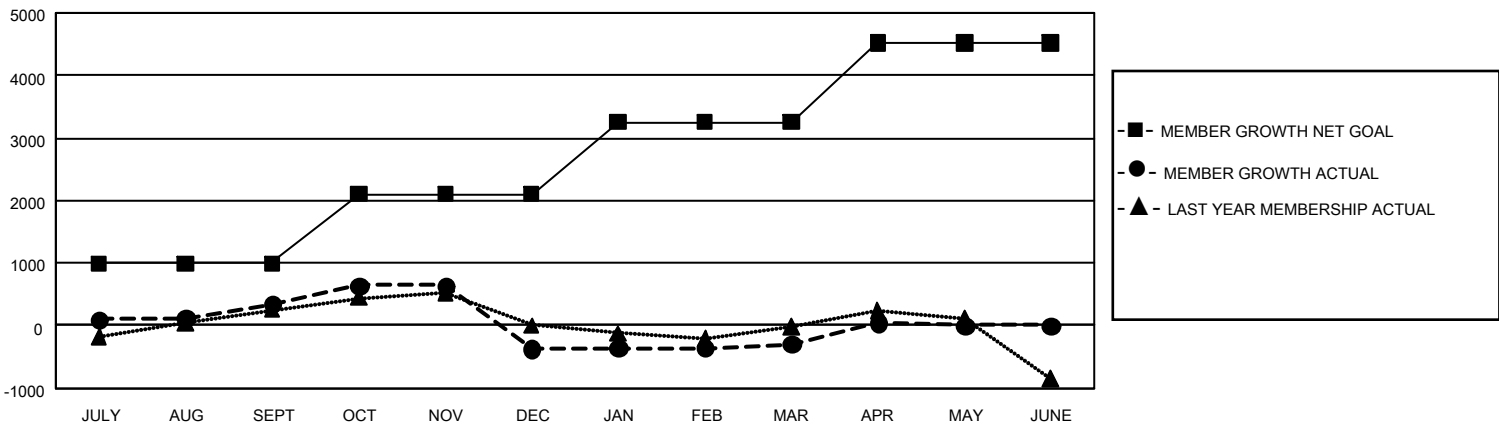
Clubs			
RESULTS FOR 2021-2022			
QUARTER	NEW CLUB GOAL	NEW CLUBS	DROPPED CLUBS
JULY/AUG/SEPT	12	5	30
OCT/NOV/DEC	24	19	9
JAN/FEB/MAR	51	9	15
APR/MAY/JUNE	51	5	1

Members			
RESULTS FOR 2021-2022			
QUARTER	MEMBER GROWTH NET GOAL	MEMBER GROWTH ACTUAL	DROPPED MEMBERS ACTUAL (including transfers)
JULY/AUG/SEPT	996	1,502	1,003
OCT/NOV/DEC	1105	1,576	2,165
JAN/FEB/MAR	1149	1,255	1,032
APR/MAY/JUNE	1270	773	398

GOALS AND ACTUAL NEW CLUBS CUMULATIVE



GOALS AND ACTUAL MEMBERS CUMULATIVE



DROPPED CLUBS: 55	
<b>DROPPED MEMBERS</b>	
DECEASED	426
CLUB CANCELLED	157
OTHER	4,015
<b>TOTAL</b>	<b>4,598</b>

1,098 CLUBS OF 1,900 ADDED 1 OR MORE NEW MEMBERS

[CLICK HERE FOR CUMULATIVE MEMBERSHIP DATA](#)

GENDER DISTRIBUTION	
MALE	25,290 (58.75%)
FEMALE	17,750 (41.24%)
NON BINARY	2 (0.00%)
PREFER NOT TO ANSWER	2 (0.00%)
<b>TOTAL FAMILY UNIT MEMBERS</b>	<b>7,326</b>
<b>FAMILY MEMBERS PAYING HALF DUES</b>	<b>3,947</b>